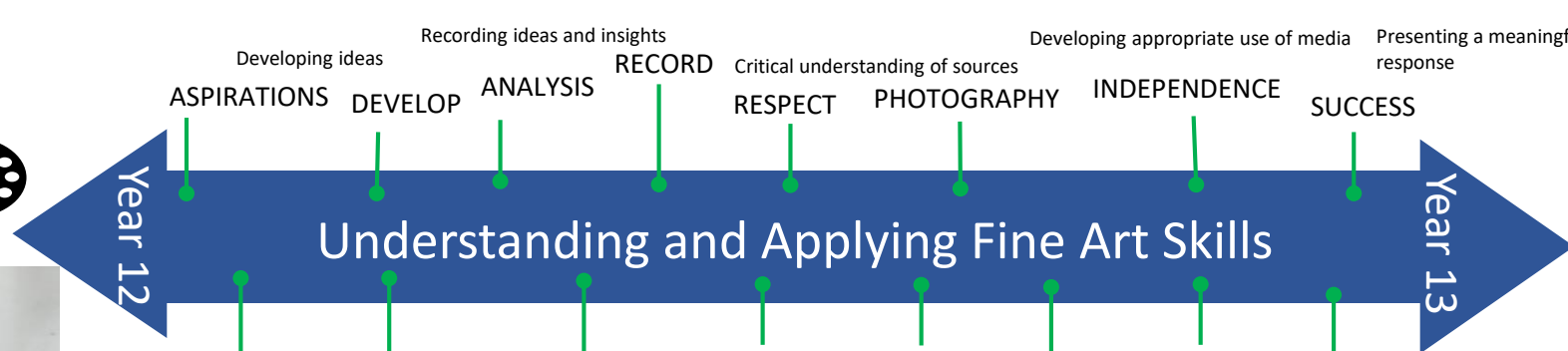
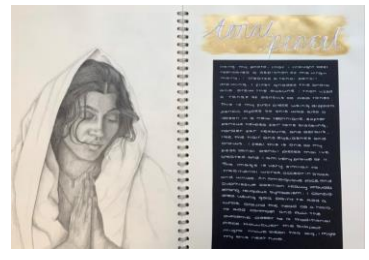
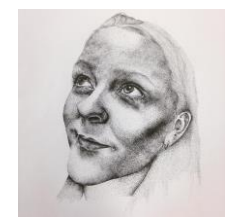
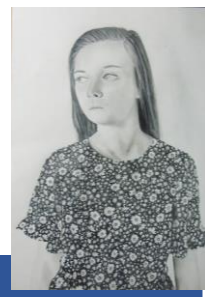
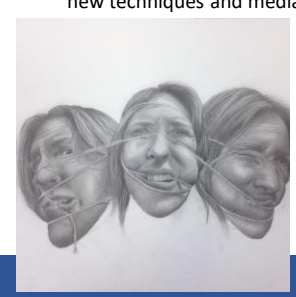


FINE ART LEARNING JOURNEY



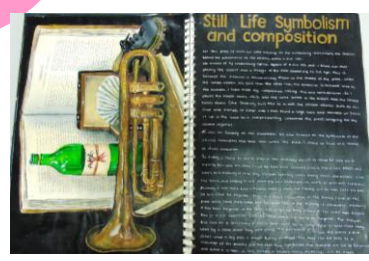
Final A level exams



SUCCESSFUL



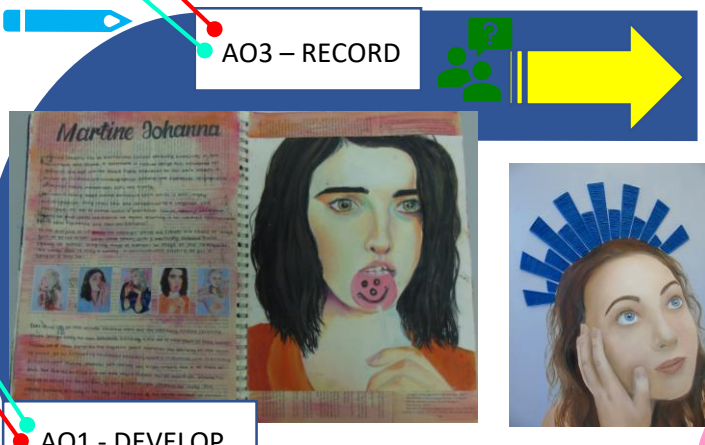
Record ideas, observations and insights relevant to intentions, reflecting critically on work and progress.



A-Level 'ESA' Component 2 – Examination Component: Students will develop and extend skills and knowledge learned in years 12/13. Students will be introduced to exam paper. Self and peer reflections, verbal and written teacher feedback and written student action. Students are assessed against Edexcel exam board assessment objectives.

Present a personal and meaningful response that realises intentions and, where appropriate, makes connections between visual and other elements

Develop ideas through sustained and focused investigations informed by contextual and other sources, demonstrating analytical and critical understanding.



AO1 - DEVELOP

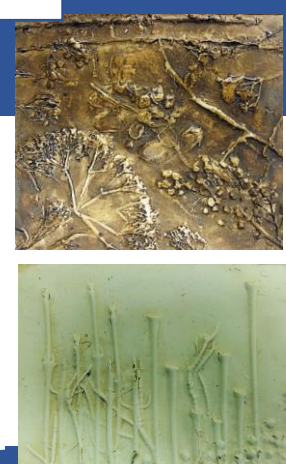


Personal Investigation Essay



YEAR 13

RESILIENT



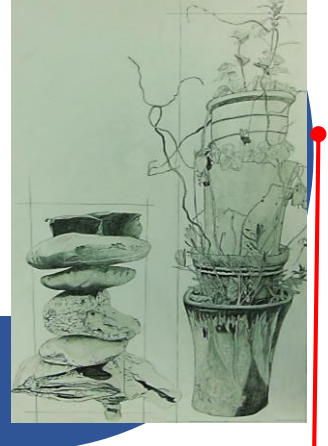
AO2 - EXPERIMENTATION



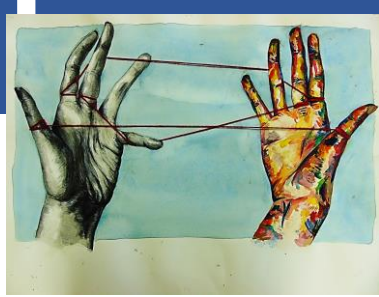
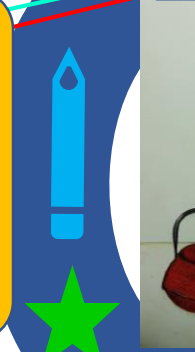
RESPECTFUL



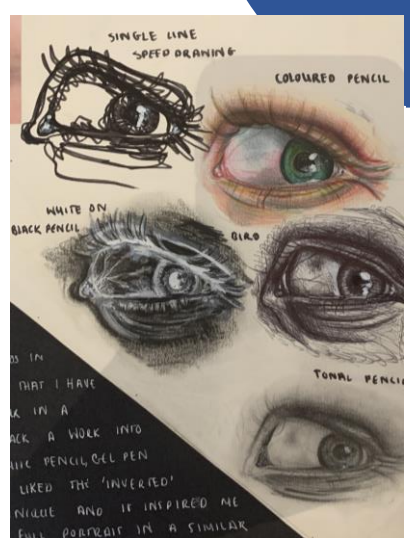
INDEPENDENT



Explore and select appropriate resources, media, materials, techniques and processes, reviewing and refining ideas as work develops.



Students begin their 'Personal Investigation' and Essay. (Independent project – 1:1 feedback and workshops with teacher).



COLLABORATIVE

Experimental Phase – Component 1 'Inside, Outside, In-between.' Students will develop and extend skills and knowledge learned in years 7,8,9,10,11. Students will be introduced to a variety of artists, culture, social influences, materials and techniques in the context of theme. Students are given greater independence and use creative initiative to develop their artworks.



FORT PITT GRAMMAR SCHOOL



Challenge



Explanations



Modelling



Deliberate Practice



Differentiated Questioning



Feedback



FORT PITT LEARNING & TEACHING